

Technology Implementation

Preparation and Pitfalls



HON. DOUG HAUBERT

LONG BEACH CITY PROSECUTOR

BYRON BOLTON

LEGAL TECHNOLOGIST

A Bureau of Justice Assistance Grant



This project was supported by Grant No. 2020-YX-BX-K001 awarded by the Bureau of Justice Assistance.

The Bureau of Justice Assistance is a component of the Department of Justice's Office of Justice Programs, which also includes the Bureau of Justice Statistics, the National Institute of Justice, the Office of Juvenile Justice and Delinquency Prevention, the Office for Victims of Crime, and the SMART Office.

Points of view or opinions in this document are those of the author and do not necessarily represent the official position or policies of the U.S. Department of Justice.

01 GUIDES OVERVIEW

02 UNDER THE HOOD

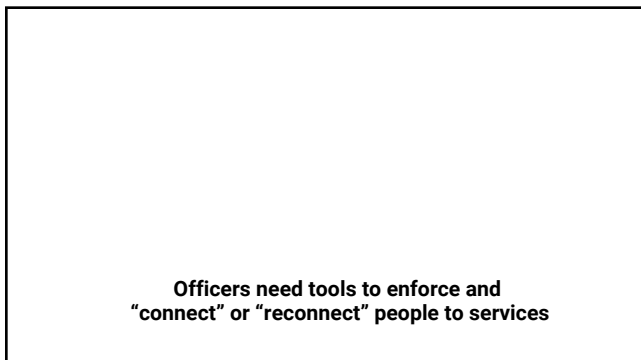
03 BUY IN & COMMUNICATION

04 SUMMARY AND QUESTIONS

**TODAY'S
SESSION**







What if police officers could:



SEARCH BY NAME

Officer searches a person's name (or part of name) to determine if person has any court orders or is already connected to diversion program



SEARCH BY LOCATION

Patrol officers could retrieve information related to specific patrol beats or "hot spot" areas of crime

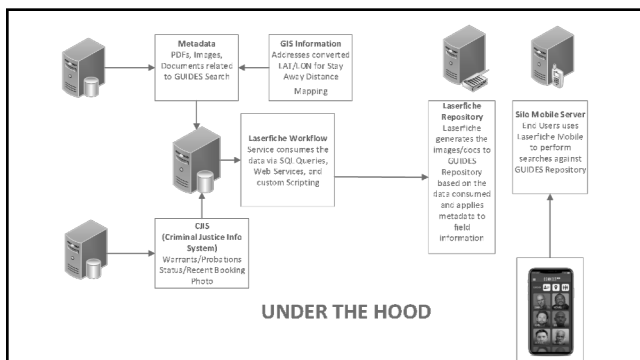


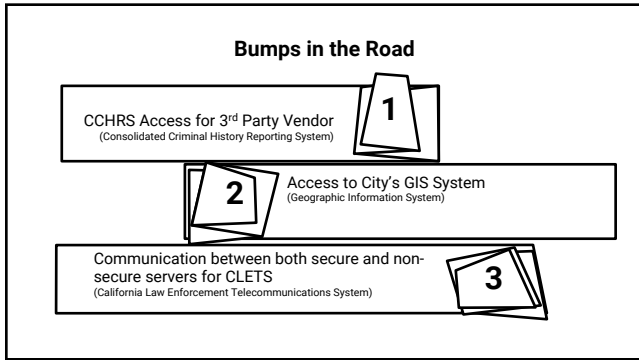
SEARCH BY PROVIDER

Officers could connect (or reconnect) people with mental health, substance abuse, or housing services

Part 02

UNDER THE HOOD





Evaluation of the Implementation & Use of GUIDES

Purposes:

- Assess who is using the app, how frequently, and for what purpose(s).
- Analyze officer perceptions of the GUIDES app and identify the benefits of and challenges to using GUIDES.
- Analyze how GUIDES facilitates police work.

Research:

- Pre- and post-implementation surveys of LBPD officers
- Post-implementation focus groups and ride-alongs
- Quantitative analysis of usage data



BUY IN - 3 Things to Consider

1

Everyone isn't excited as you are

2

Selling your project to all stockholders

3

Have an executive on your team

COMMUNICATION

Successfully Communicating your thoughts and plans to all parties involved (not just the department heads).

Have extensive detailed Individual/Group planning sessions to determine departmental interaction cooperation and impact.

Determine early on who's in charge of what.

COMMUNICATION IS THE KEY

Part 04

SUMMARY AND QUESTIONS

QUESTIONS?



Laserfiche

DOUGLAS HAUBERT
Long Beach City Prosecutor
Douglas.Haubert@longbeach.gov
(562) 570-5614

BYRON BOLTON
Legal Technologist
Byron.Bolton@longbeach.gov
(562) 570-5645
